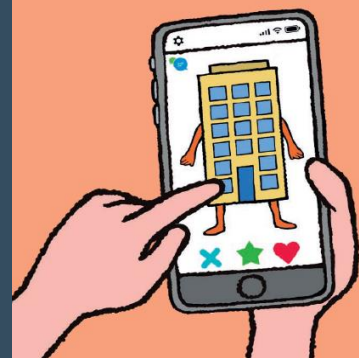


## GLOBAL SELECT FUND

### Investment Commentary

Q2 2024



## Market review

The best equity returns were to be found in LargeCap during the opening half of 2024. SmallCap underperformed its larger peer by a staggering 12% over the last 6 months, while MidCap did not fare much better. This marked the worst half-year underperformance for Global SMidCap for over a quarter of a century. Unless this reverses, the asset class will deliver a record 7<sup>th</sup> consecutive year of underperformance versus LargeCap.

What was behind this dramatic divergence? Conditions in the equity markets continued to be dominated by two main themes: stickier-than-expected inflation and the ongoing domination of large technology stocks in the US. In both the US and parts of Europe, stubborn services inflation led certain Central Banks to delay interest rate cuts. This had a negative impact on smaller companies which are more interest rate sensitive compared to their larger peers.

LargeCap technology stocks – and in particular anything “A.I.” related – performed strongly. Nvidia, which on its own is worth roughly the same as the entire Russell 2000, continued its heady triple-digit ascent (although the Magnificent Seven did begin to show some signs of bifurcation).

Towards the end of the second quarter, political upheaval weighed on most parts of the equity markets. The UK faced an election and a change of government, while in France a snap election was called by Emmanuel Macron, which raised market volatility. In the US, the election bandwagons began to roll.

# Portfolio

During the quarter, the NAV of the Sterling Accumulation Share Class declined by 5.4%, an underperformance of 2.4% versus the MSCI World SMidCap Index.

The strongest contributions during the quarter came from **Tyler Technologies**, the leading provider of software to the US Government sector, which rose as Q1 results came in ahead of expectations and guidance for 2024 was raised. **Pro Medicus**, the provider of software used to view and transmit diagnostic images, continued to win market share in the US. **NCAB**, the full-service supplier of printed circuit boards, outperformed after demand stabilised, and management indicated a gradual improvement over the coming quarters with higher order intake and revenues.

The weakest contributions came from **Sartorius Stedim Biotech**, the provider of equipment used in the production of biologic drugs, which continued to underperform following management caution around order intake. **Bruker**, the global specialist vendor of advanced scientific instruments, drifted on continued apathy around both its end market strength and its recent M&A strategy. **Adyen**, the leading provider of global digital payments, saw profit taking after a lacklustre interim update tempered the excitement following very strong share price performance in Q1.

## Outlook

At the end of 2023 we suggested that the conditions might be ripening for the “SmallCap Effect” to emerge from its multi-year hibernation. This is yet to happen. How does this set us up for the next six months?

Despite inflation remaining “higher for longer”, there were clear signs of cooling towards the end of June. On a June annualised basis core CPI in the US was below 1%, while the three-month average was only a whisker above 2%. Most reassuringly for Growth investors, such as ourselves, CPI shelter inflation (the average cost of housing in the US) plummeted to 2%. Not so long ago it was above 8%. The market reaction to this data? Futures priced in a 91% probability of a rate cut in September (up from 55%); Treasuries rallied and the yield curve steepened; and the technology behemoths fell (Nvidia by almost 6%), while SmallCap gained.

While one month of data is too little to indicate that we are in “risk on” mode to a large enough extent that SMidCap will catch up on this year’s underperformance anytime soon, it is another indicator that market dominance comes hand-in-hand with concentration risk. Some recent research that we found interesting was published by Bridgewater (*The life cycle of market champions*): “a consideration for investors today is that most investors’ portfolios have higher exposure than ever to the current champions [the large tech stocks]... over a third of a typical US-market-weighted portfolio is allocated to the current basket of champions, and in a world portfolio, this share ends up close to 20%—the highest in over 50 years”.

With macro data becoming more supportive of smaller company investing, it is worth ending with a point on valuation. Global SMidCap has never looked as attractive in over 20 years on a relative basis: the asset class is trading on near record P/E and P/Book discounts to LargeCap. With a long-term view, now may be as good a time as any for dipping a toe back into SmallCap waters.

## Latest reports

- [Deep Dive #11: Project Net Zero Carbon 2023](#)
- [Deep Dive #10: The Built Environment](#)
- [PRI 2023 – Assessment Report](#)
- [Proxy Voting Summary 2023](#)

*The views expressed in this article are those of the author at the date of publication and not necessarily those of Montanaro Asset Management Ltd. The information contained in this document is intended for the use of professional and institutional investors only. It is for background purposes only, is not to be relied upon by any recipient, and is subject to material updating, revision and amendment and no representation or warranty, express or implied, is made, and no liability whatsoever is accepted in relation thereto. This memorandum does not constitute investment advice, offer, invitation, solicitation, or recommendation to issue, acquire, sell or arrange any transaction in any securities. References to the outlook for markets are intended simply to help investors with their thinking about markets and the multiple possible outcomes. Investors should always consult their advisers before investing. The information and opinions contained in this article are subject to change without notice.*

Montanaro Asset Management Ltd | 53 Threadneedle Street | London EC2R 8AR

T: +44 20 7448 8600 [www.montanaro.co.uk](http://www.montanaro.co.uk)